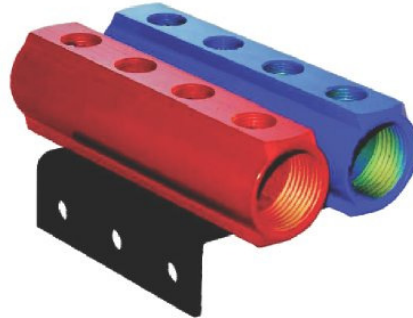
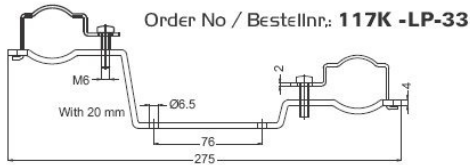


117K

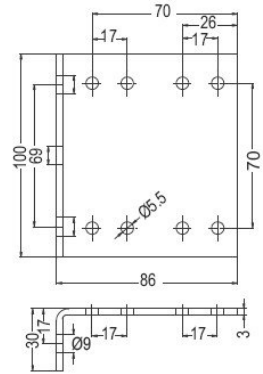


Order No / Bestellnr.:
117K -BS-70

Collectors Assembling Clamps (1")
Montage Klemmen für Kollektor (1")



(Also Aluminium Collector 1.1/4" & 1.1/2" available)
Auch Aluminiumkollektor 1.1/4" & 1.1/2" verfügbar



1/4" - 3/4"

No of exits G1/4"	Order No Bestellnr.	L
4	117K-04-13/26	155
5	117K-05-13/26	190
6	117K-06-13/26	225
7	117K-07-13/26	260
8	117K-08-13/26	295
9	117K-09-13/26	330
10	117K-10-13/26	365
11	117K-11-13/26	400
12	117K-12-13/26	435

3/8" - 3/4"

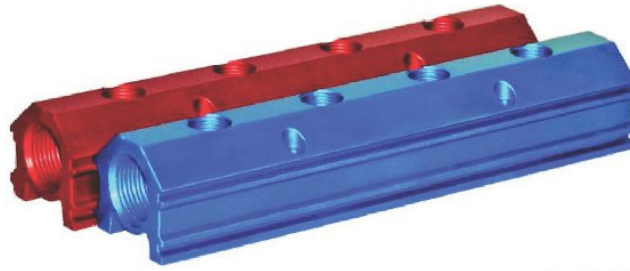
No of exits G3/8"	Order No Bestellnr.	L
4	117K-04-17/26	155
5	117K-05-17/26	190
6	117K-06-17/26	225
7	117K-07-17/26	260
8	117K-08-17/26	295
9	117K-09-17/26	330
10	117K-10-17/26	365
11	117K-10-17/26	400

3/8" - 1"

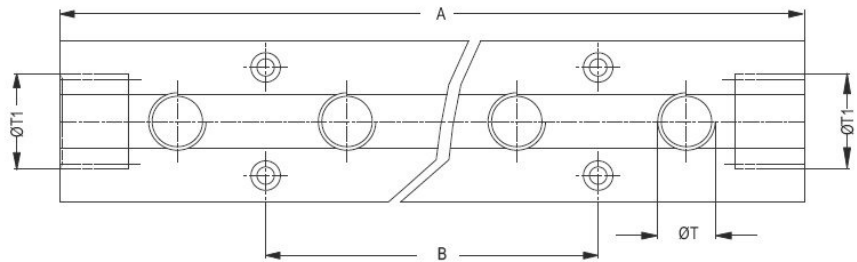
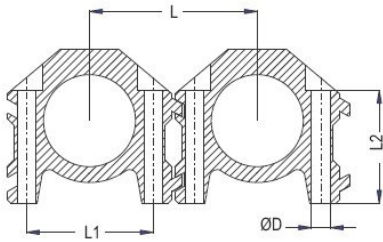
No of exits G3/8"	Order No Bestellnr.	L
4	117K-04-17/33	165
5	117K-05-17/33	200
6	117K-06-17/33	235
7	117K-07-17/33	270
8	117K-08-17/33	305
9	117K-09-17/33	340
10	117K-10-17/33	375
11	117K-11-17/33	410
12	117K-12-17/33	445

1/2" - 1"

No of exits G1/2"	Order No Bestellnr.	L
4	117K-04-21/33	210
5	117K-05-21/33	260
6	117K-06-21/33	310
7	117K-07-21/33	360
8	117K-08-21/33	410
9	117K-09-21/33	460
10	117K-10-21/33	510
11	117K-10-21/33	560



117KA



Collector Size	ØD	L	L1	L2
3/4"	4.5	45	31	30
1"	7.2	53	40.5	36.5

3/8" - 3/4" (ØT - ØT1)

No of exits G 3/8"	Order No Bestellnr.	A	B
4	117KA-04-17/26	229	102
6	117KA-06-17/26	331	204
8	117KA-08-17/26	433	306

1/4" - 3/4" (ØT - ØT1)

No of exits G 1/4"	Order No Bestellnr.	A	B
4	117KA-04-13/26	190	114
6	117KA-06-13/26	266	190
8	117KA-08-13/26	342	266

1/4" - 1" (ØT - ØT1)

No of exits G 1/4"	Order No Bestellnr.	A	B
4	117KA-04-13/33	190	76
6	117KA-06-13/33	266	152
8	117KA-08-13/33	342	228
10	117KA-10-13/33	418	304
12	117KA-12-13/33	494	380
16	117KA-16-13/33	646	532

3/8" - 1" (ØT - ØT1)

No of exits G 3/8"	Order No Bestellnr.	A	B
4	117KA-04-17/33	229	153
6	117KA-06-17/33	331	255
8	117KA-08-17/33	433	357
10	117KA-10-17/33	535	459
12	117KA-12-17/33	637	561
16	117KA-16-17/33	841	765

1/2" - 1" (ØT - ØT1)

No of exits G 1/2"	Order No Bestellnr.	A	B
4	117KA-04-21/33	229	153
6	117KA-06-21/33	331	255
8	117KA-08-21/33	433	357
10	117KA-10-21/33	535	459
12	117KA-12-21/33	637	561



Thraed
Gewinde

G 1/2"
G 3/4"
G 1"

Order No
Bestellnr.

KTS 21
KTS 26
KTS 33

Thraed
Gewinde

G 1. 1/4"
G 1. 1/2"
G 2"

Order No
Bestellnr.

KTS 42
KTS 48
KTS 60

I17EMK

Modular socket / plug adapting system for the mould
Moduladaptionssystem für das Werkzeug

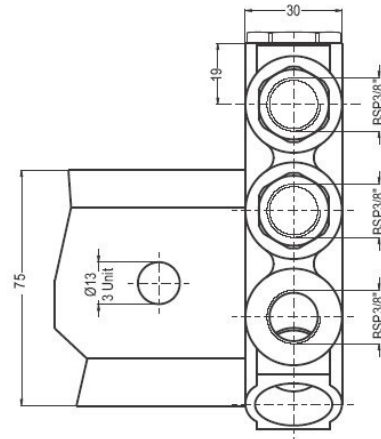
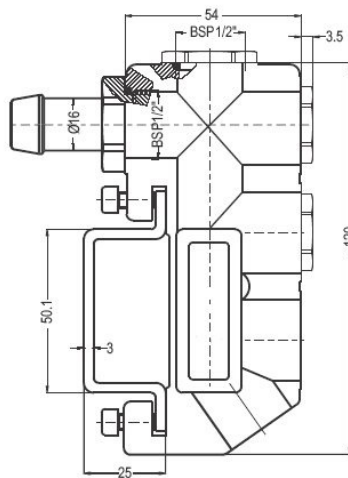
Interchangeability-Kompatibilität
STAUBLI EMI 15

Standard version - Standardversion
Brass - Messing
Nitrile - NBR (Ni)
Nickel plated - Vernickelt

I17EMK.06.00 Include
Pressure plug 3/8" x 2
Pressure plug 1/2" x 1
TAF 2I.16 (Ø16-1/2" Male thread)
100.08 EUB I7 Shut-off Nipple

I17EMK.06.00 besteht aus
Verschlussstopfen 3/8" x 2
Verschlussstopfen 1/2" x 1
TAF 2I.16 Nippel (Ø16-1/2" AG)
100.08 EUB I7 absperrende Nippel

Order No / Bestellnr. : **117EMK-06-00**



Working Condition

Maximum working pressure : 10bar
Working Temperature :
FPM (V) : -10°C to 150°C
NBR (Ni) : -10°C to 90°C

Betriebsbedingungen

Betriebsdruck : 10bar
Betriebstemperatur :
FPM (V) : -10°C to 150°C
NBR (Ni) : -10°C to 90°C

Circuit description 100.08 EUB I7 Shut-off
socket has red or blue ring.
Also circuit tube can identified by using
red or blue ring with number 0 to 12.

Einfach Kodierung 100.08 EUB I7
Steckbuchze kann mit rotem oder blauem
Fabring bestellt werden.
Außerdem können die SCHLAUCHleitungen mit
rot- oder blaunummerierten Markierungsringen
(von 1 bis 12) bestückt werden.



Carriage rail for assembling
(50cm long)
Schiene für die Montage
(50cm lang)

Order No / Bestellnr. : **117EMK-50-RL**

